

Riks - Stroke

Graphs from the year 2012 annual report

Figure 1

Annual number of stroke events recorded

Number per year

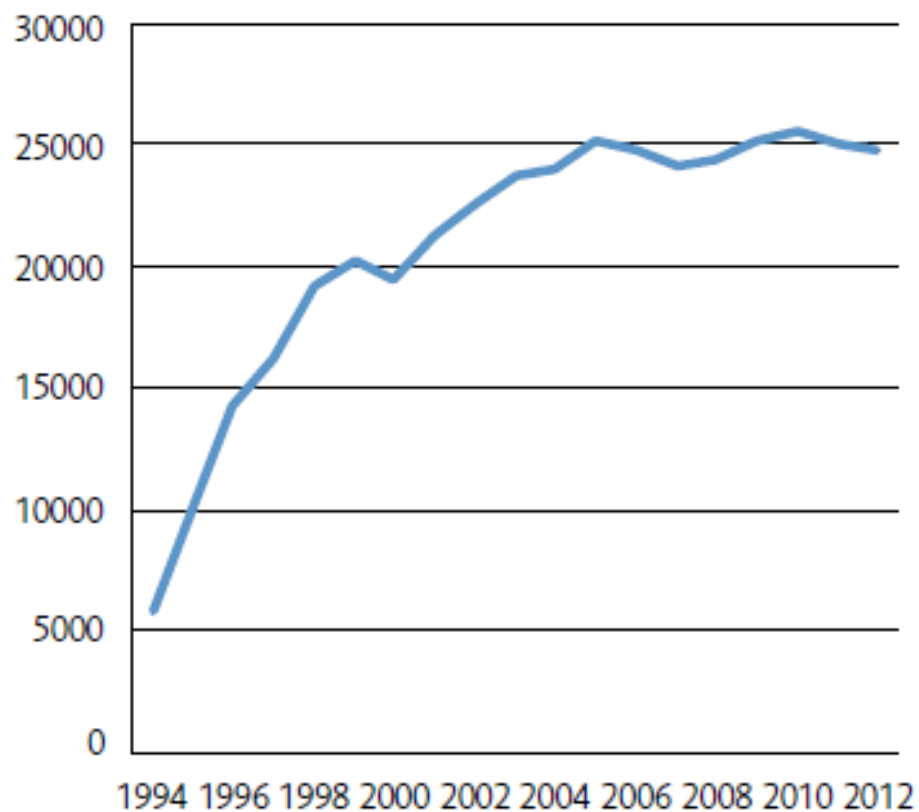


Figure 2

Total number of stroke events recorded in Riks-Stroke

Cumulated number over years since start

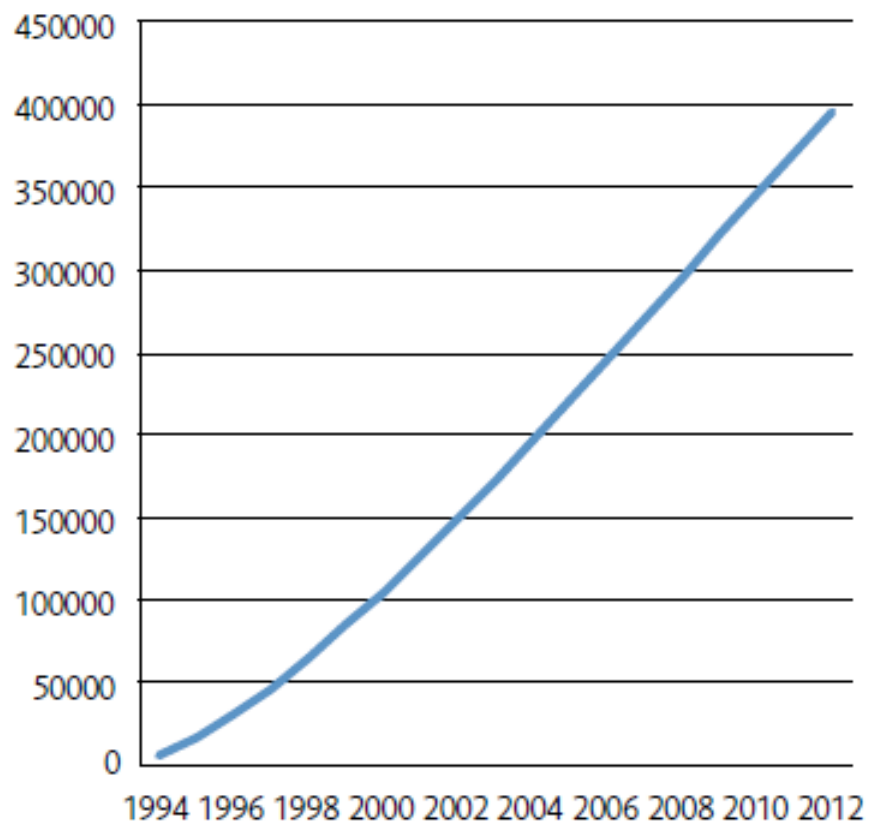


Figure 3

Stroke diagnoses

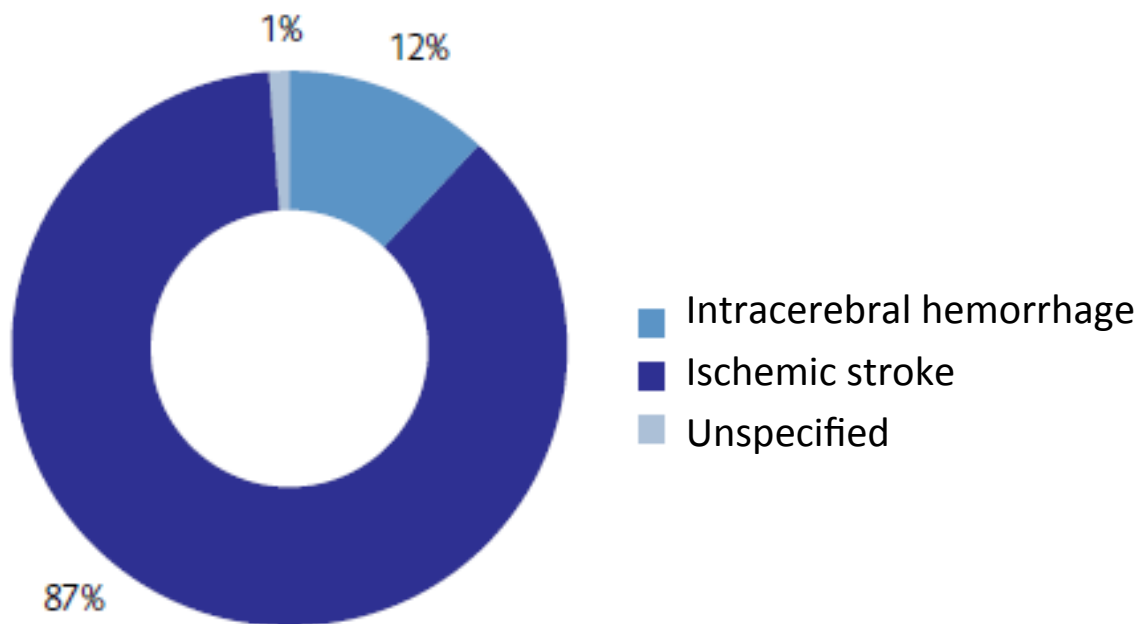


Figure 4

Type of care at admission to hospital

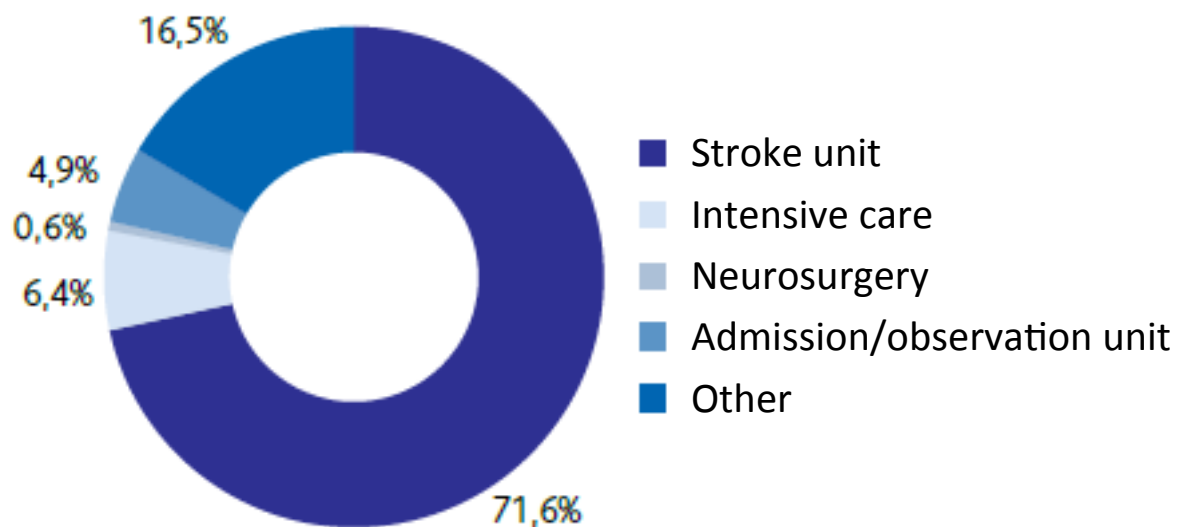


Figure 5

Type of care during major part of hospital stay

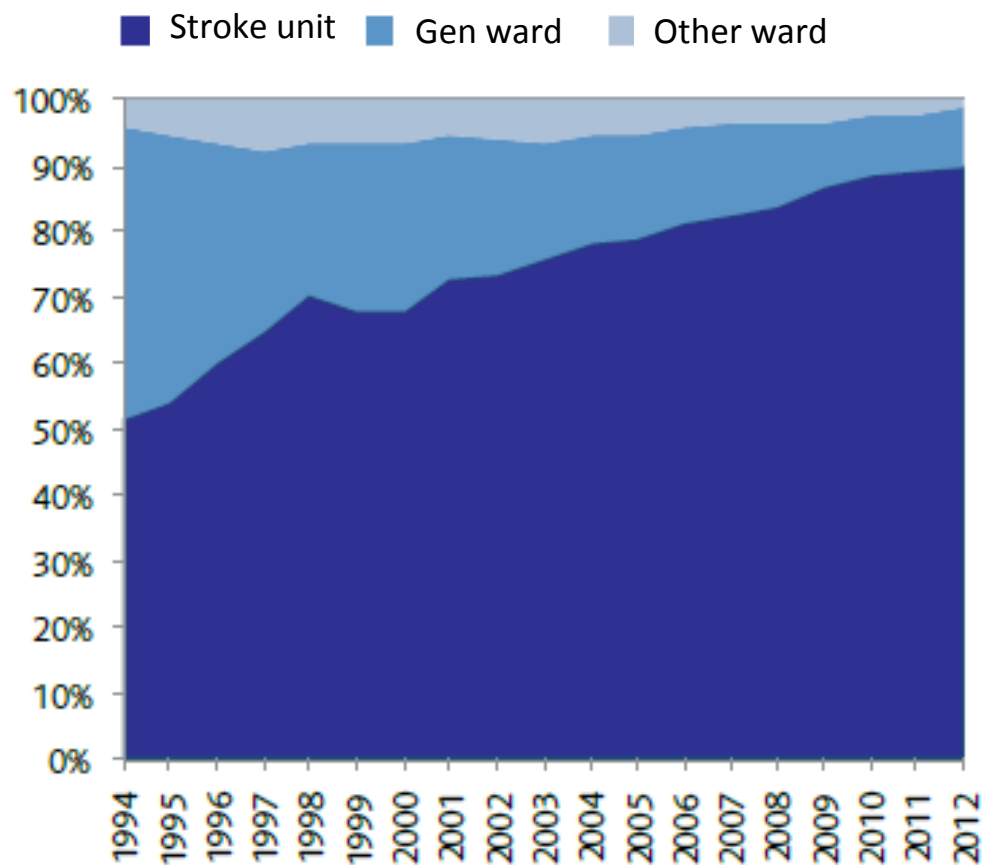
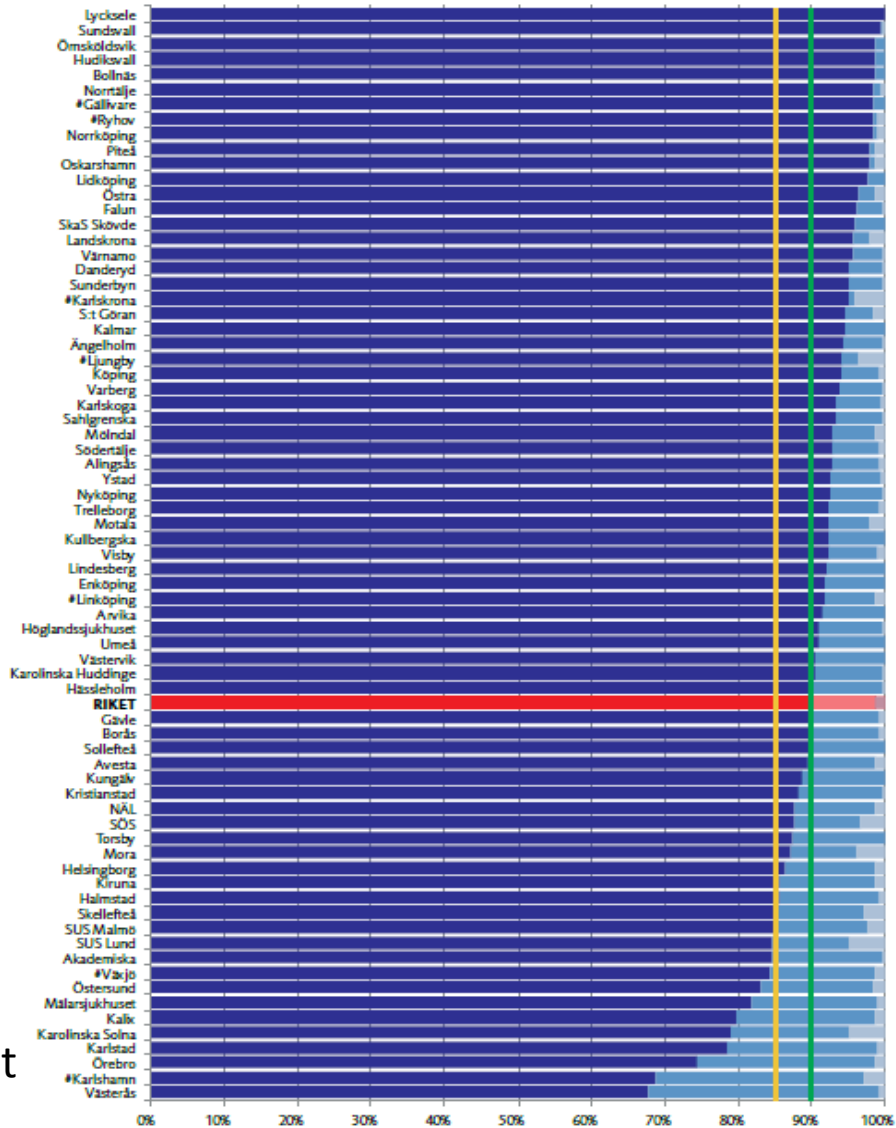


Figure 6

Type of care during major part of hospital stay

Comparison between hospitals



Green line: High target

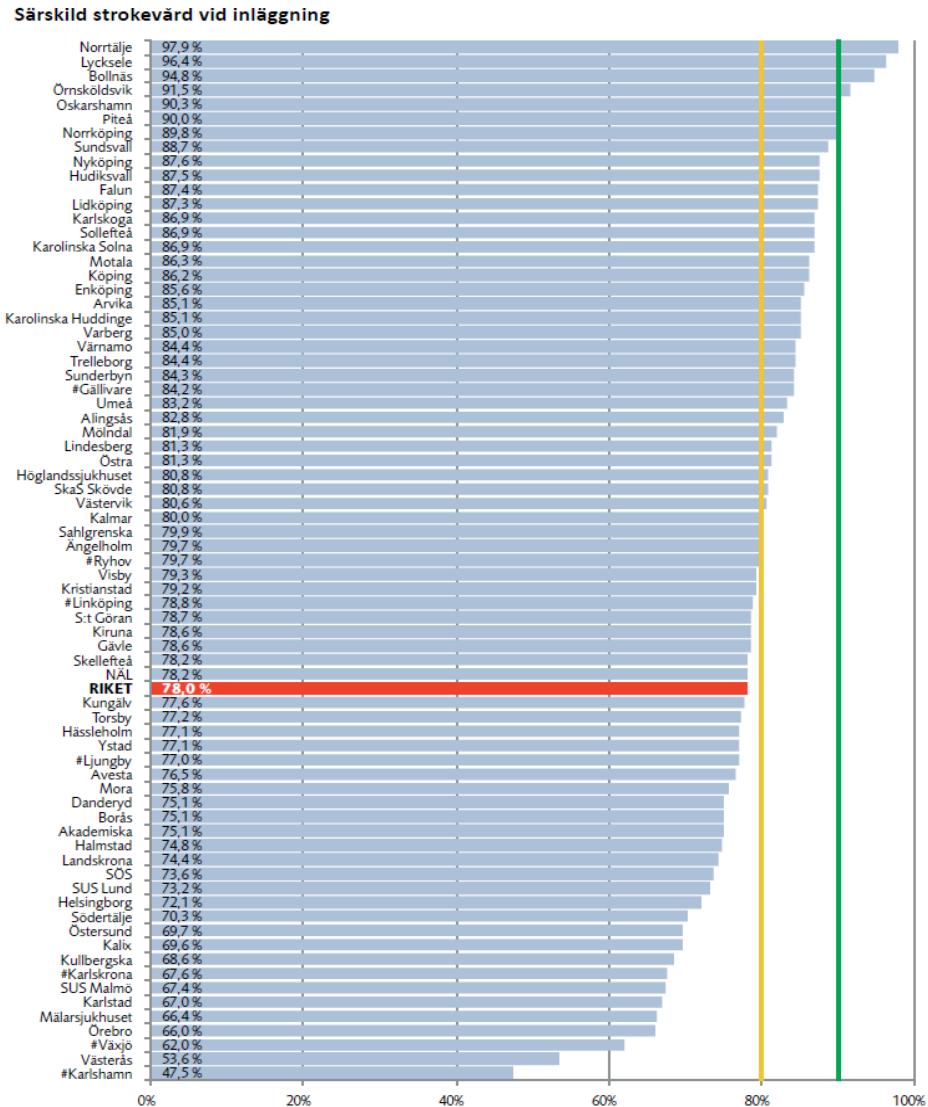
Yellow line: Moderate target

Figure 7

Type of care at admission to hospital

-

Comparison between hospitals



Figur 6. Andelen med särskild strokevård (strokeenhet, intensivvårdsavdelning eller neurokirurgisk klinik) vid inläggning på sjukhus. Grön linje anger hög och gul linje måttlig målnivå. Sjukhus med täckningsgrad <75 % eller avsaknad av täckningsgrad (och därför osäkra data) har markerats med #.

Green line: High target
Yellow line: Moderate target

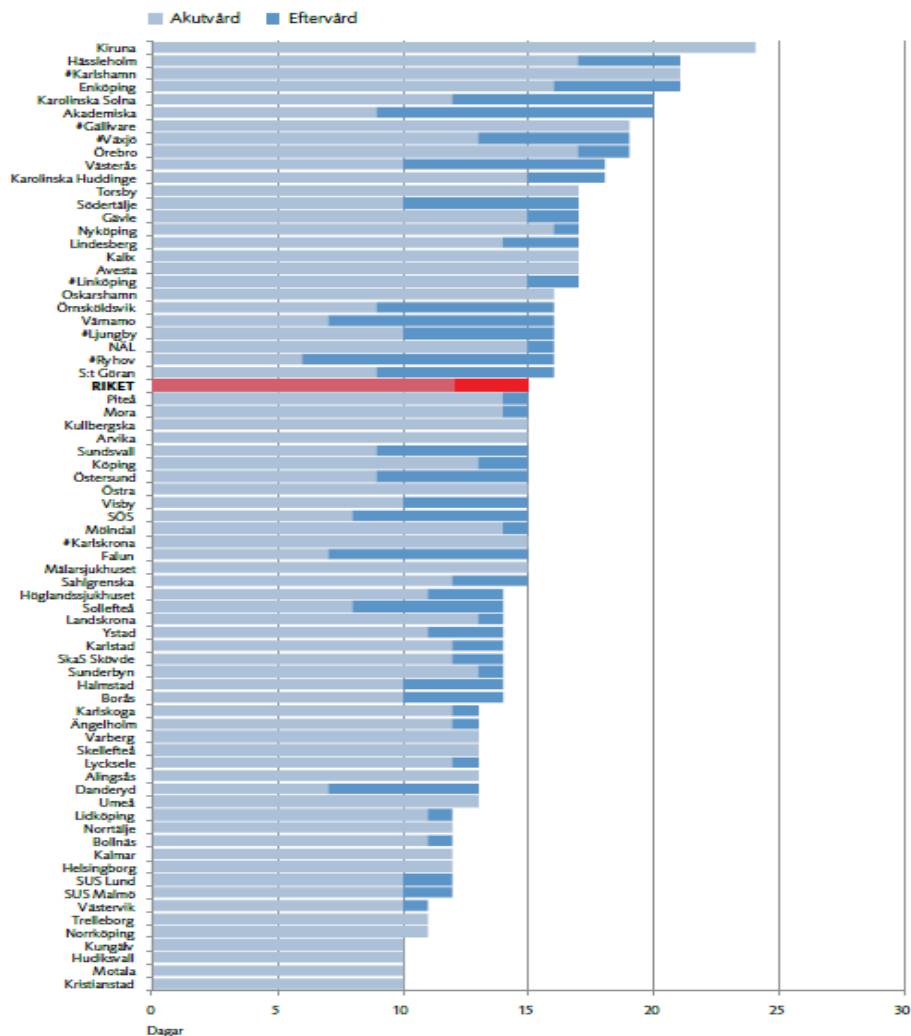
Figure 8

Median length of hospital stay

-

Comparison between hospitals

Medianvärdtider



Figur 10. Medianvårdtid (dagar) på akutklinik och i landstingsfinansierad eftervård. Sjukhus med täckningsgrad <75 % eller avsaknad av täckningsgrad (och därför osäkra data) har markerats med #.

Figure 9

Reperfusion therapy, nationwide

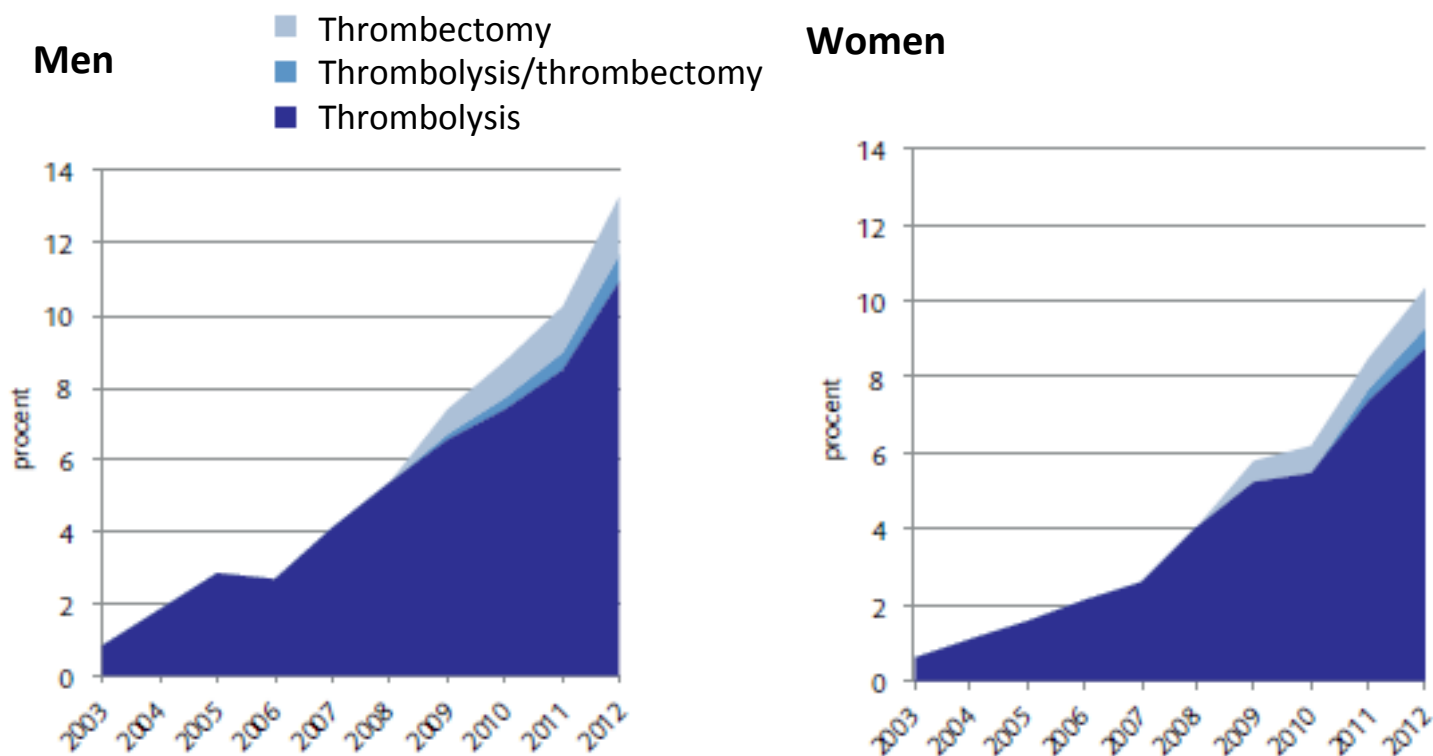


Figure 10

Reperfusion therapy

-
Comparison between
regions

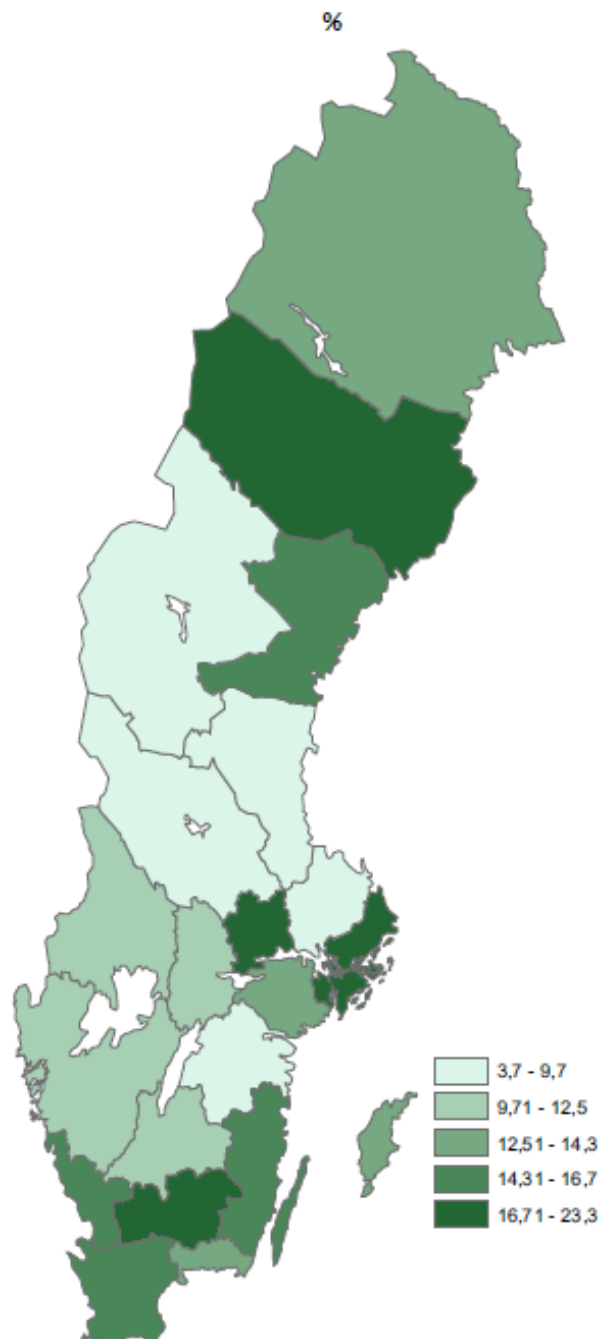
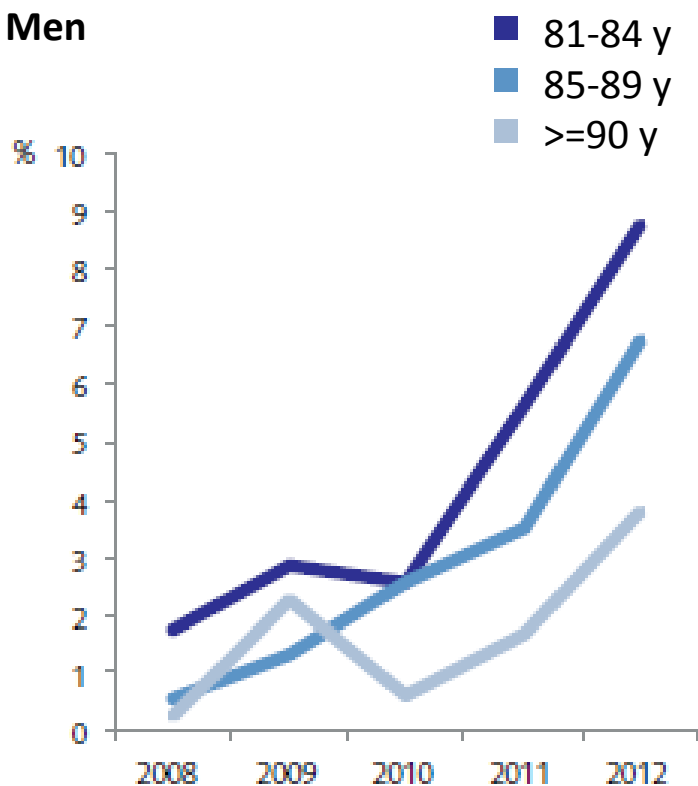


Figure 11

Thrombolysis rates in ages above 80

Men



Women

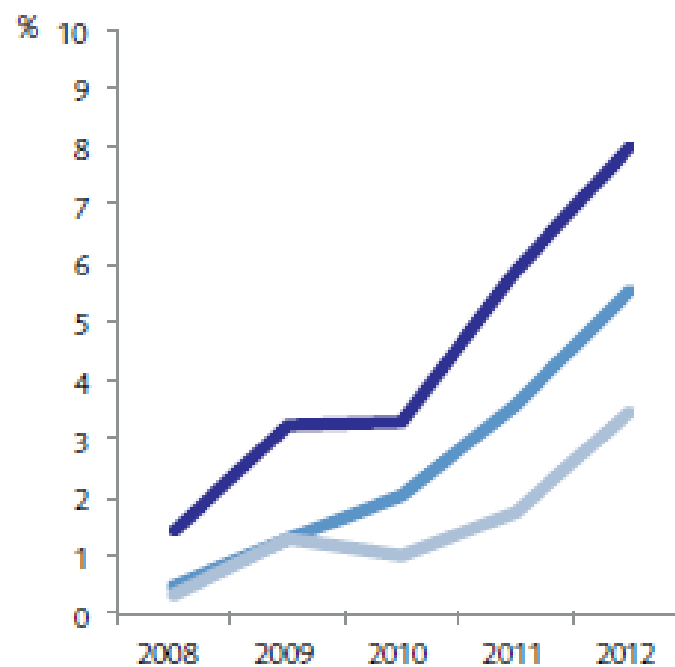


Figure 12

Proportion arriving in hospital within 3 hours

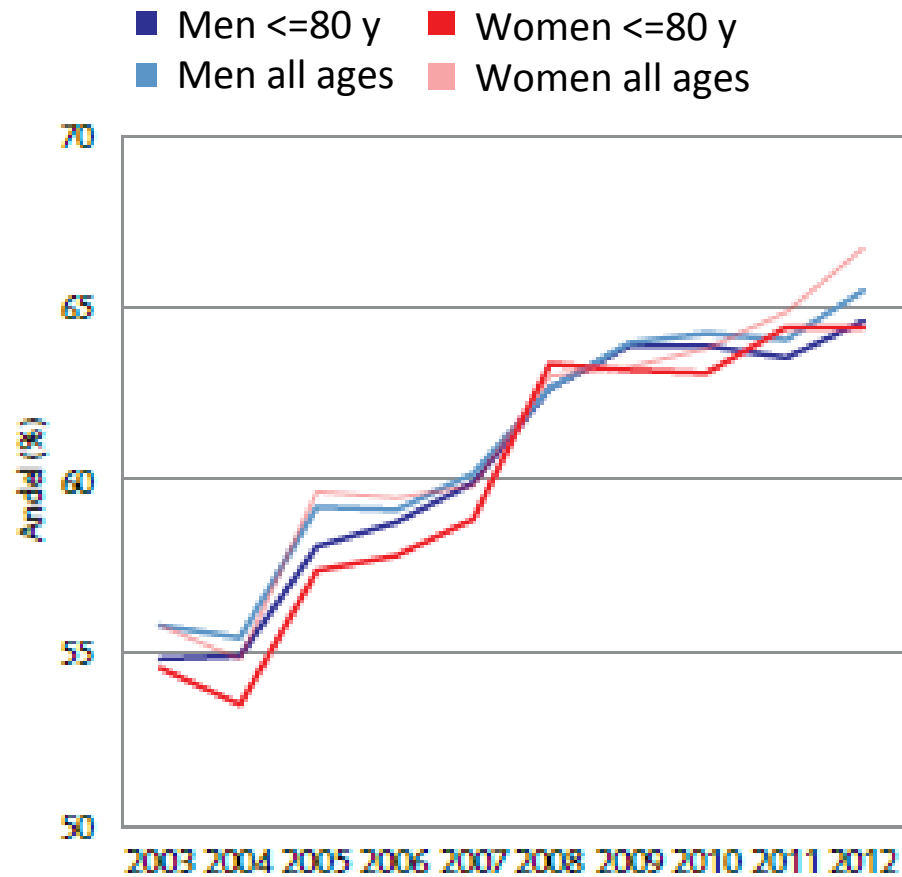


Figure 13

Proportion of prenotifications out of all stroke events

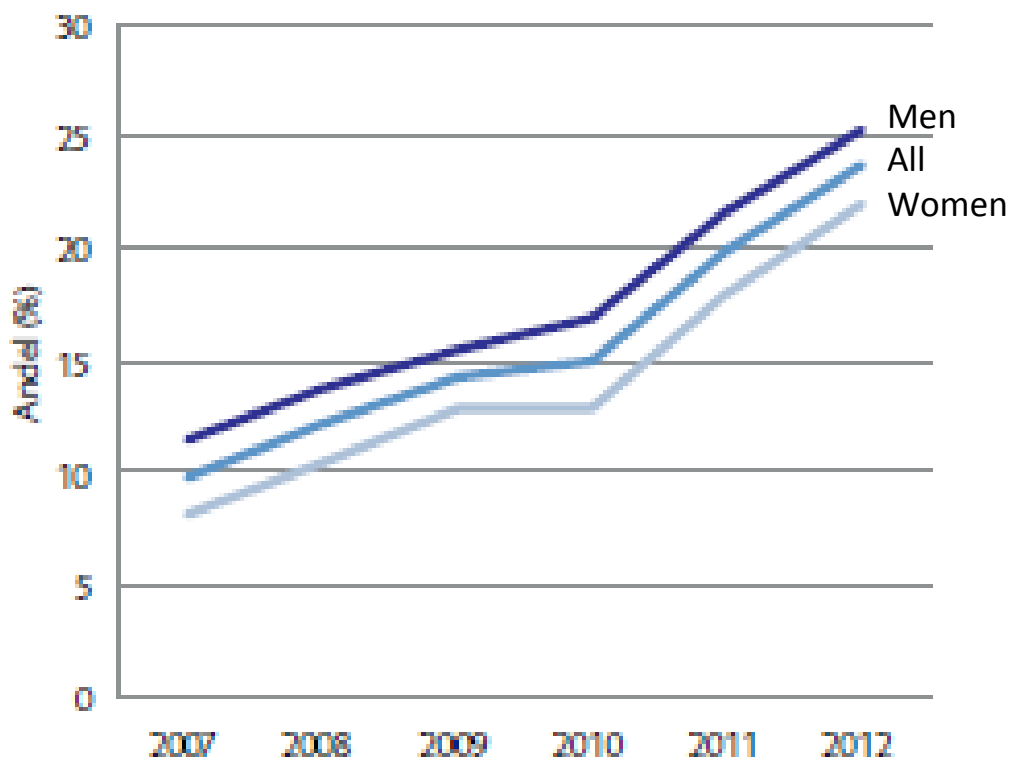


Figure 14

Association between proportion of prenotifications and proportion of patients receiving reperfusion therapy (by county)

Reperfusion, %

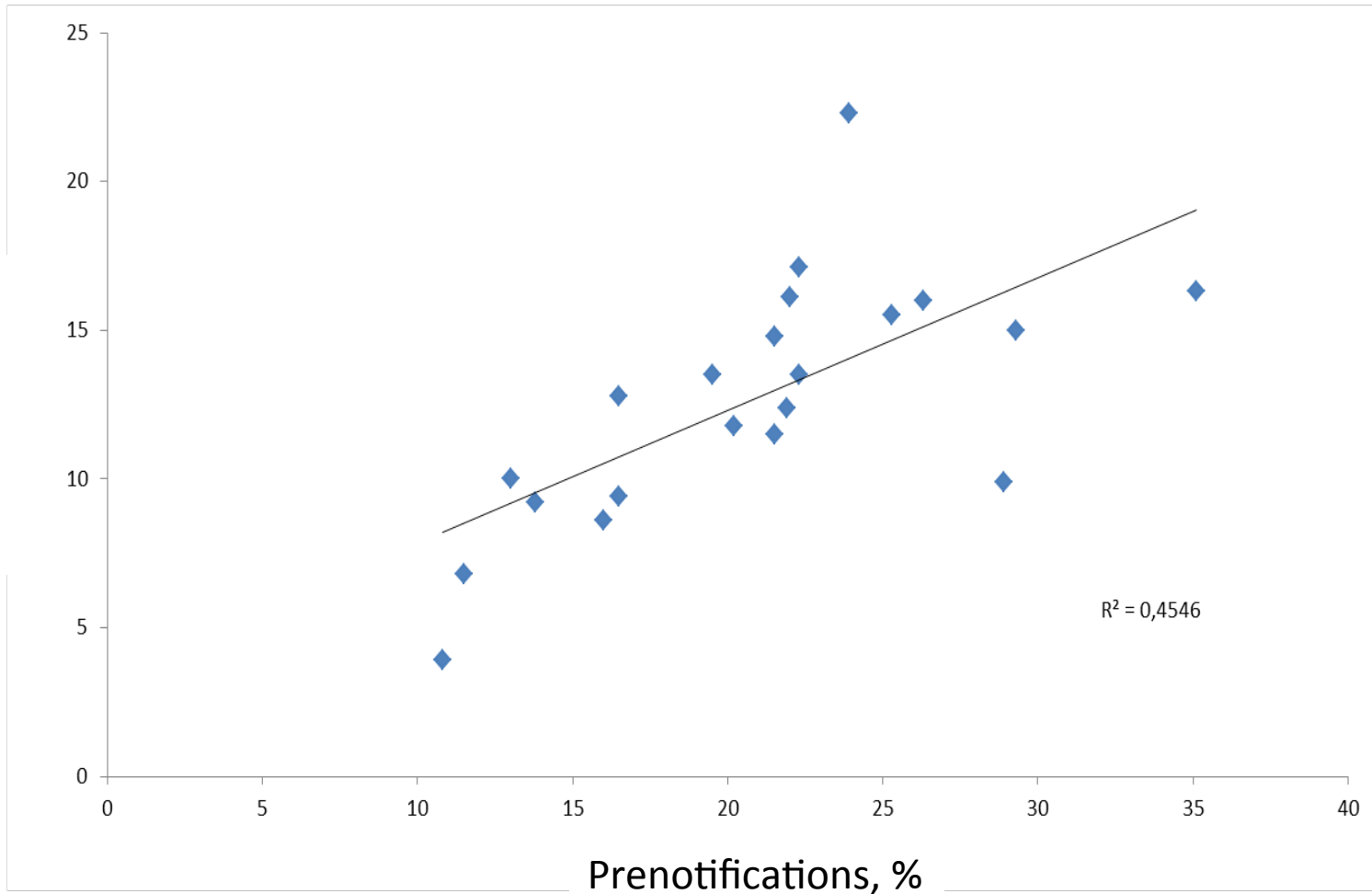
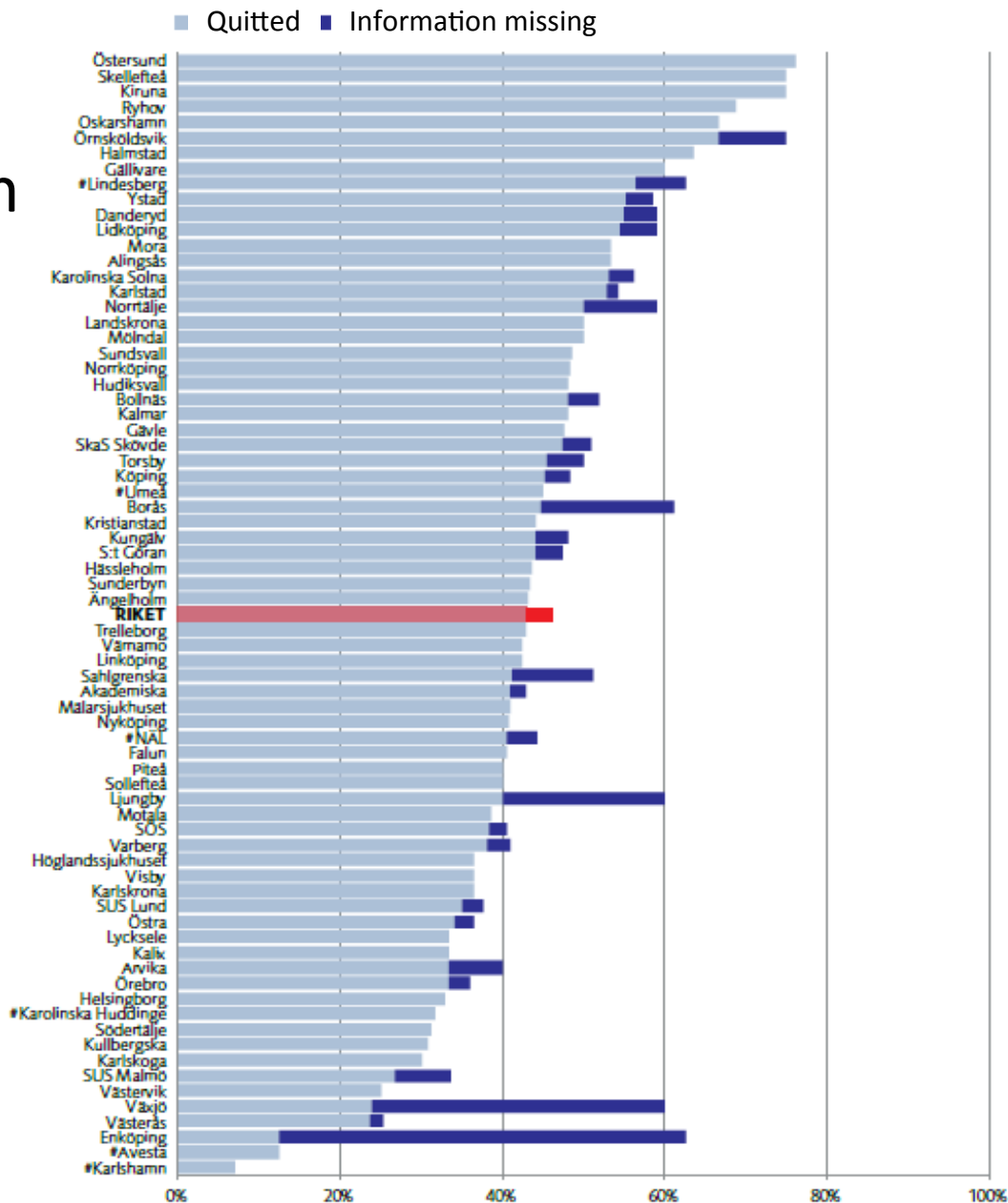


Figure 15

Smoking cessation rates 3 months after stroke

Comparison between hospitals



Fig



Figure 16

Proportion discharged with any antithrombotic drug after stroke - Comparison between hospitals

Green line: High target
Yellow line: Moderate target

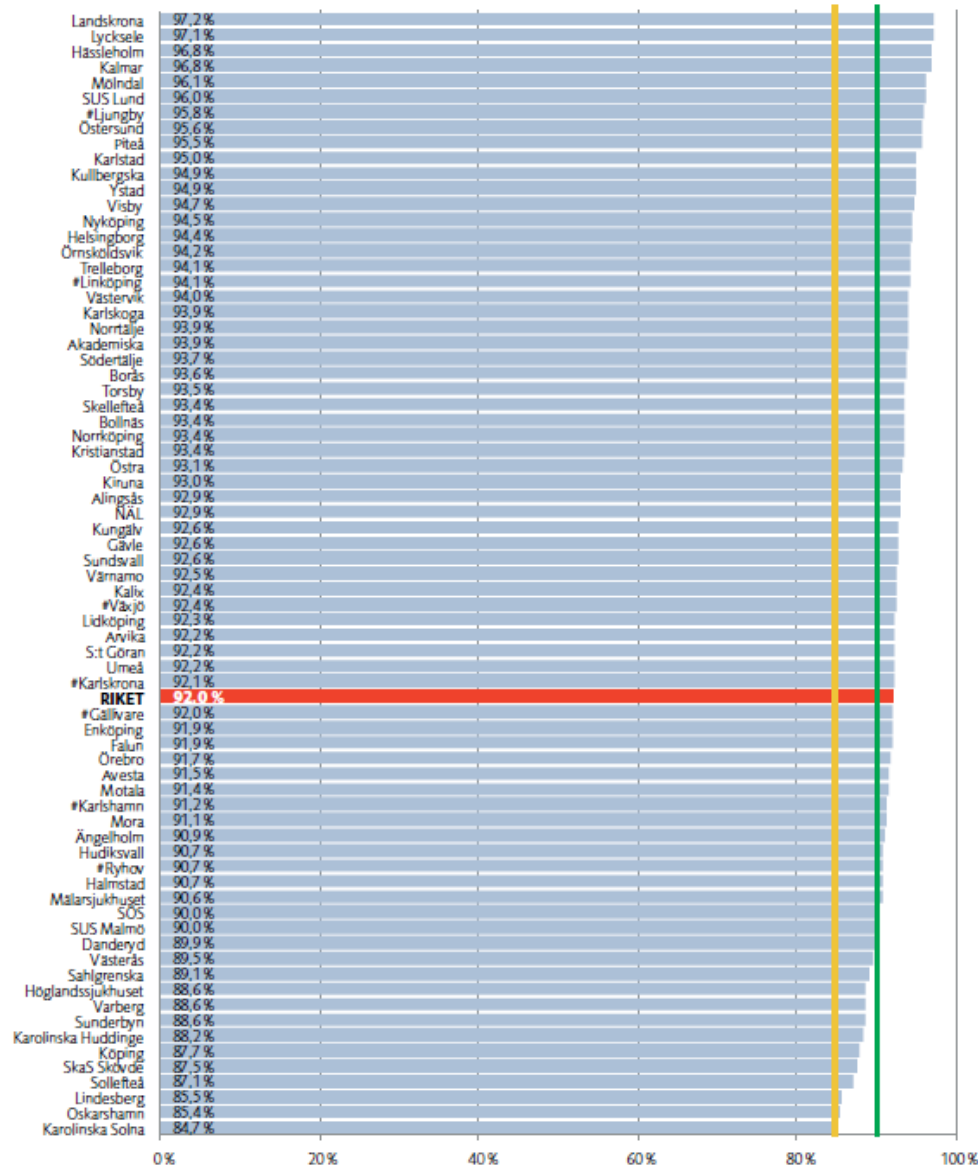


Figure 17

Proportion of patients with embolic stroke discharged with oral anticoagulants

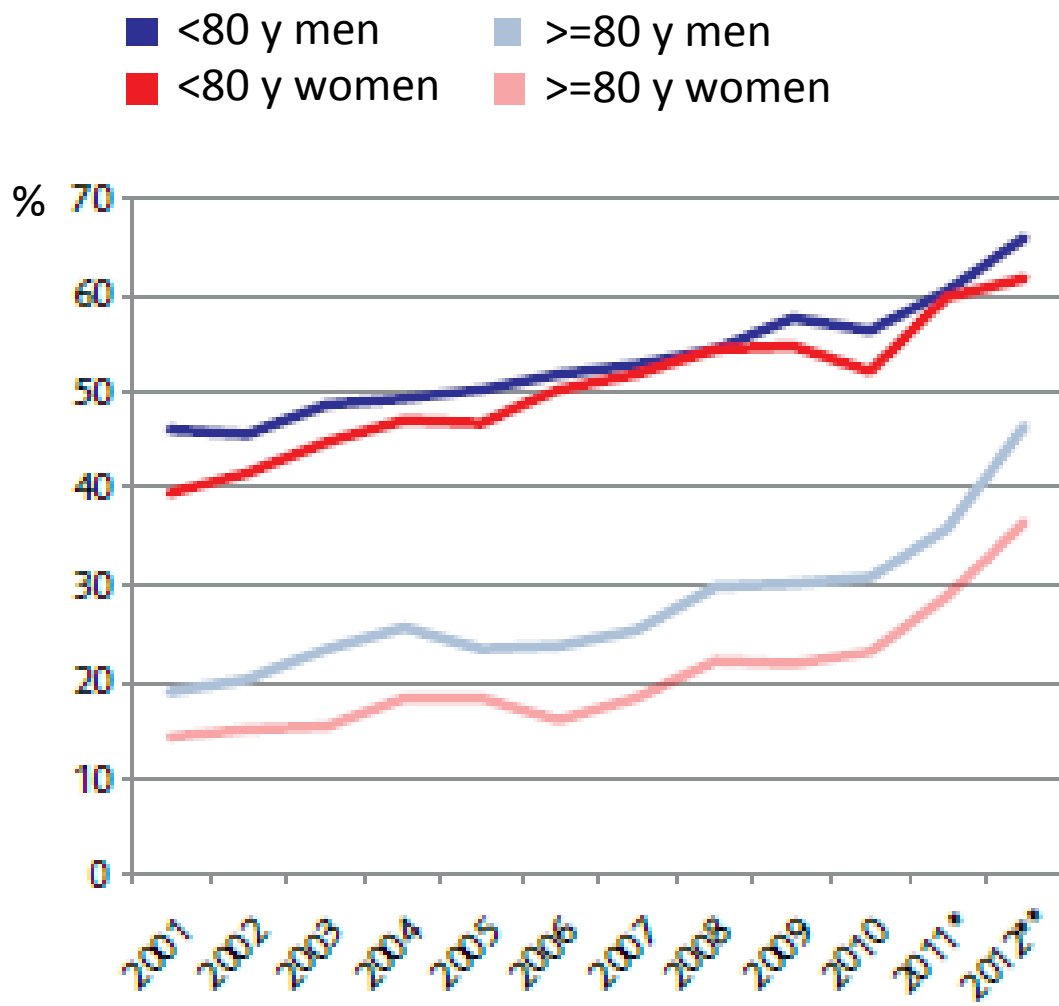


Figure 18

Proportion of patients with embolic stroke discharged with oral anticoagulants - Comparison between hospitals

Green line: High target
Yellow line: Moderate target

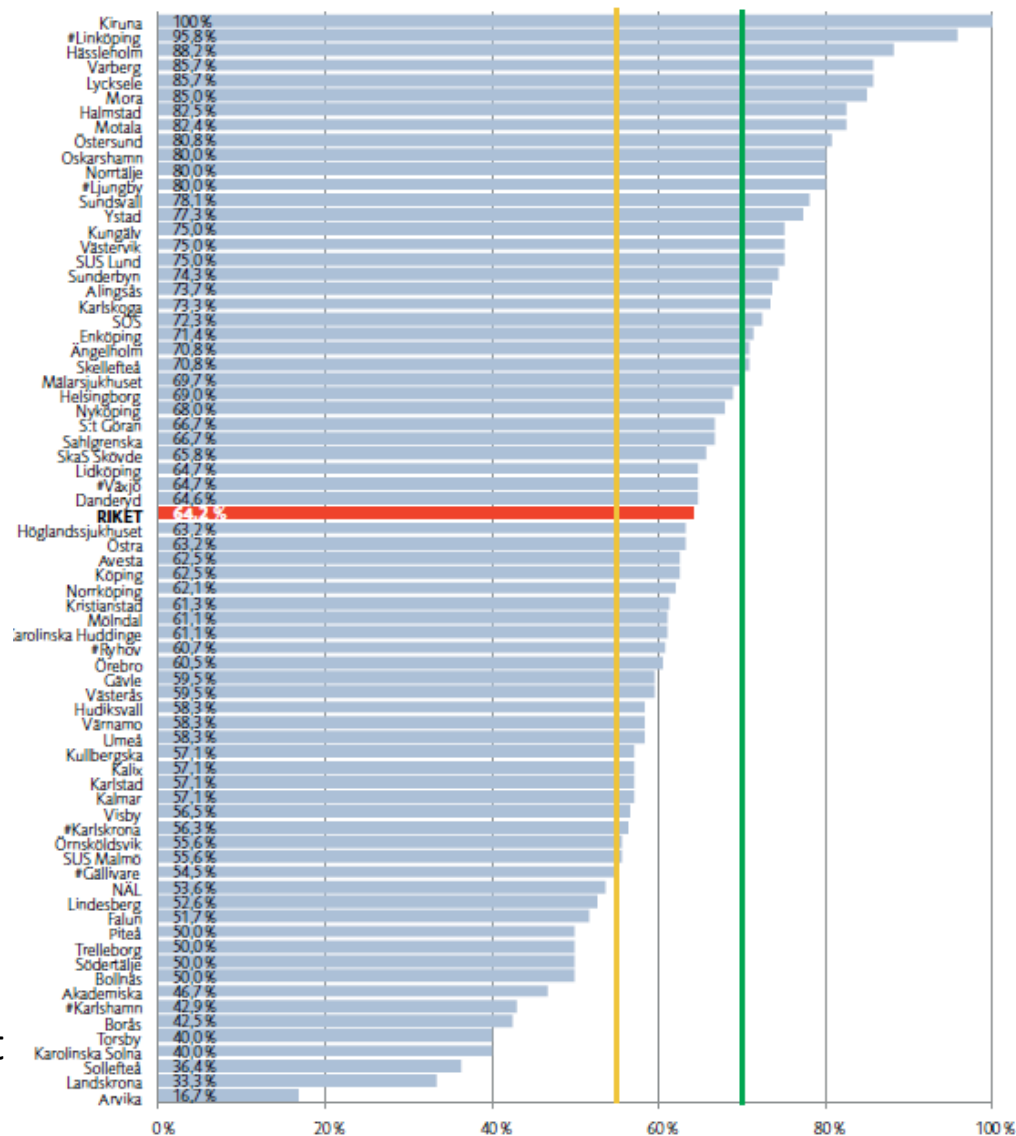
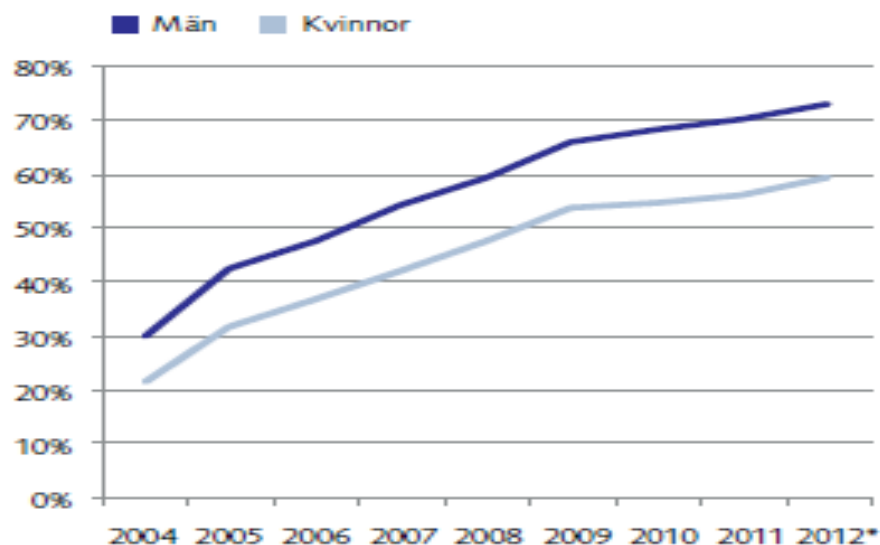


Figure 19

Proportion of patients with ischemic stroke discharged with statins 2004-2012

Unadjusted



Age-adjusted

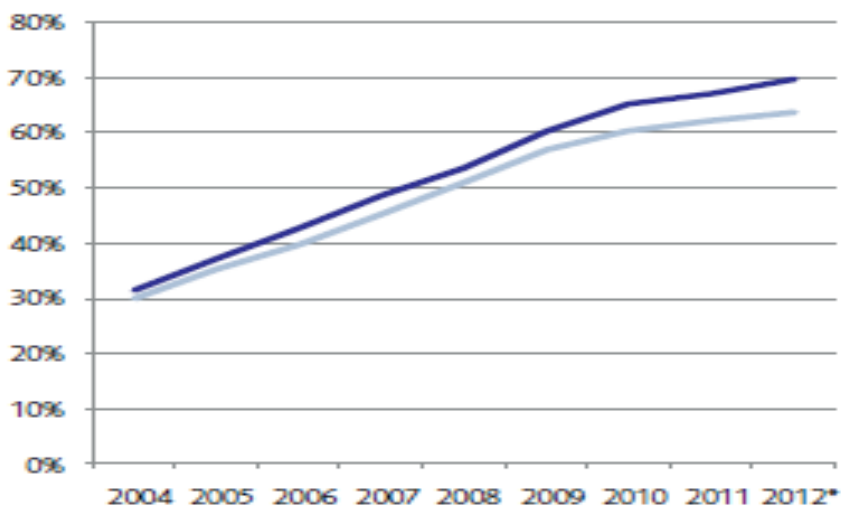
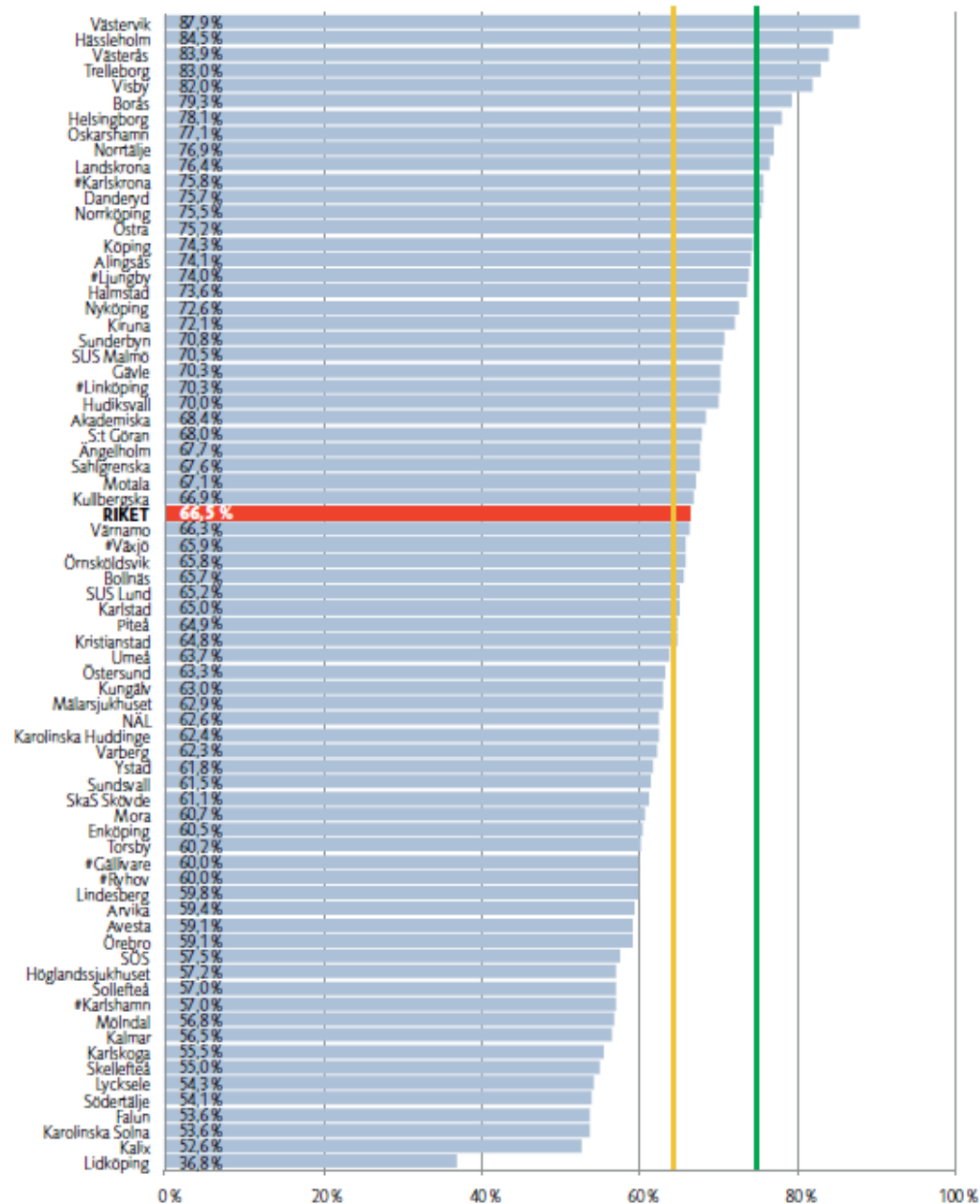


Figure 20

Proportion of patients with ischemic stroke discharged with statins

Comparison between hospitals



Green line: High target

Yellow line: Moderate target



Figure 21

Proportion
satisfied with
rehabilitation
after discharge
from hospital

-

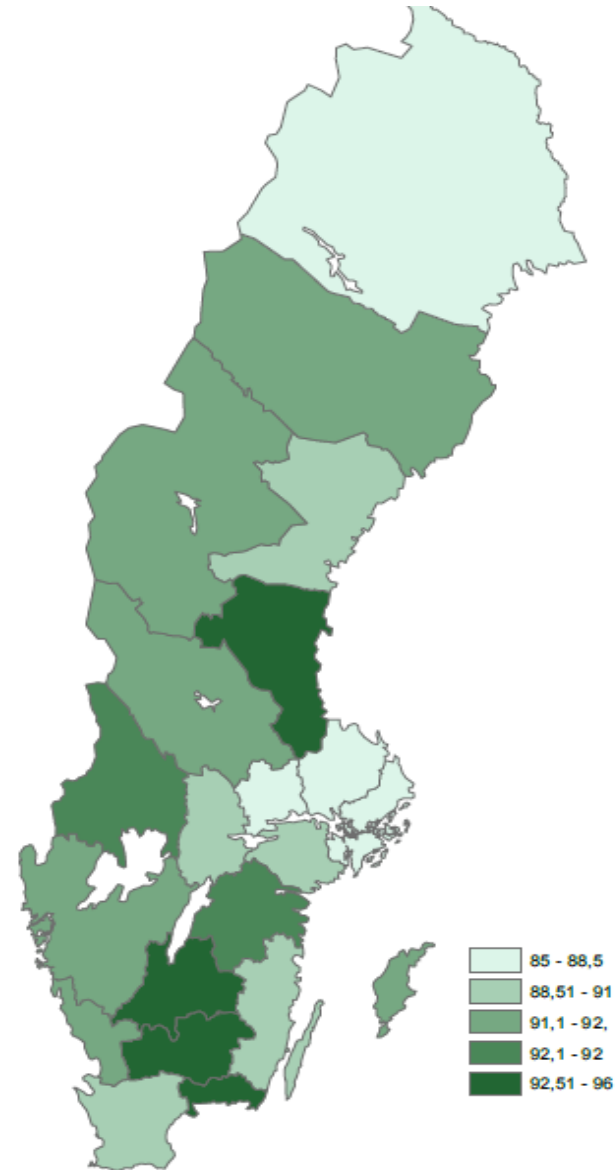


Figure 22

Proportion of patients with early supported discharge by region

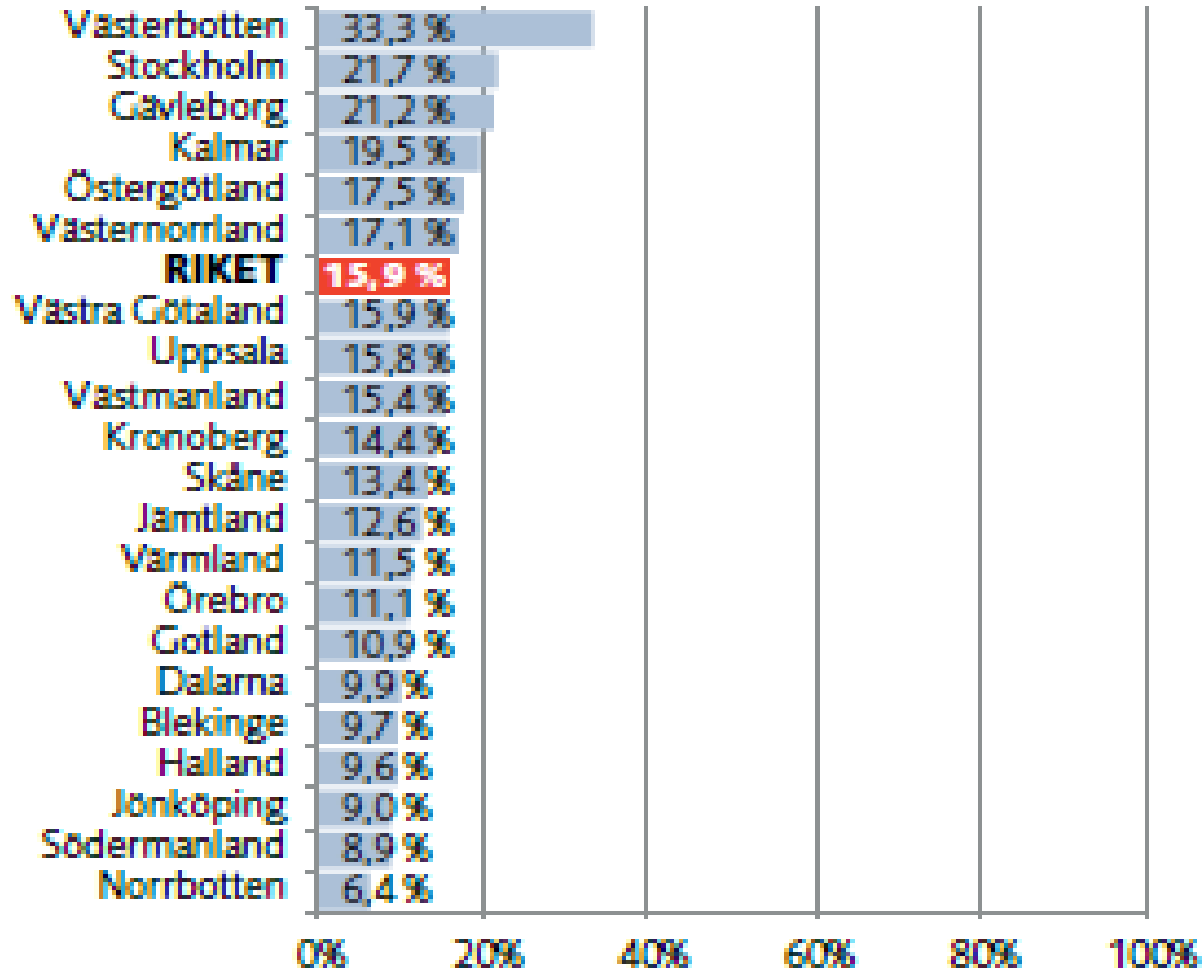


Figure 23

Proportion of patients with speech problems that had been assessed or treated by a speech therapist, by region

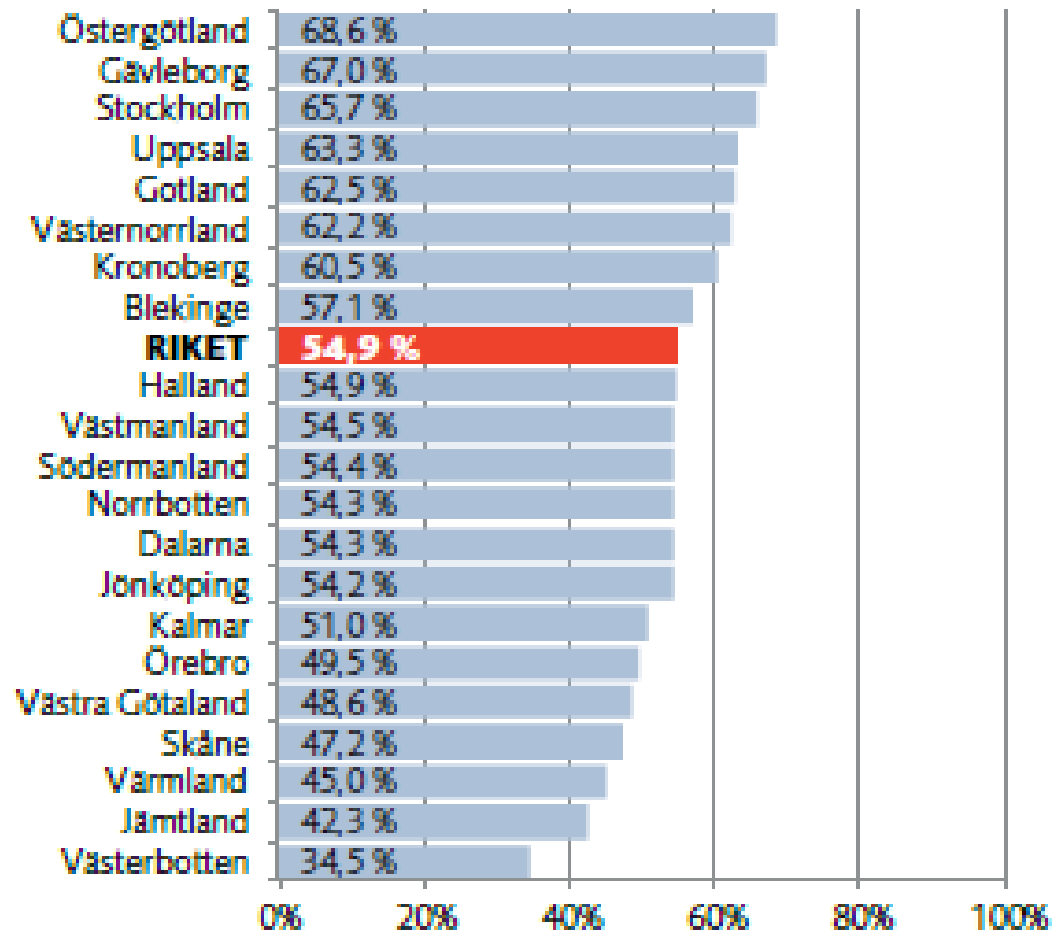


Figure 24

Proportion of patients reporting need of assistance by next-of-kins

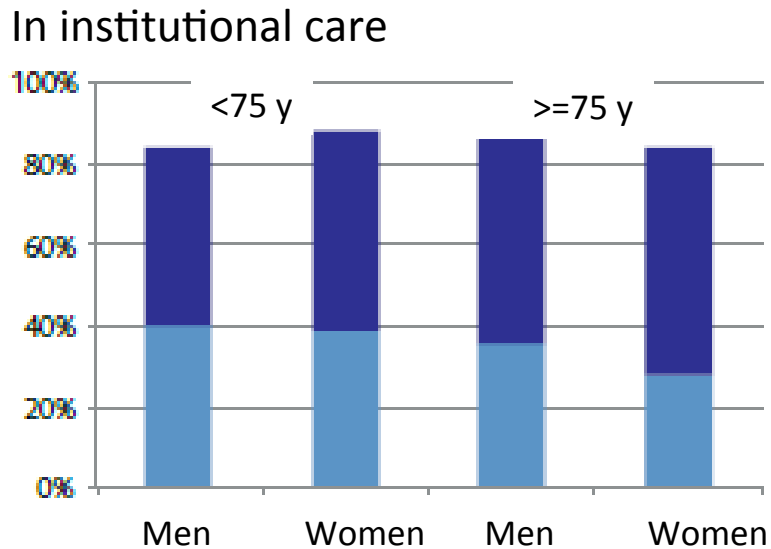
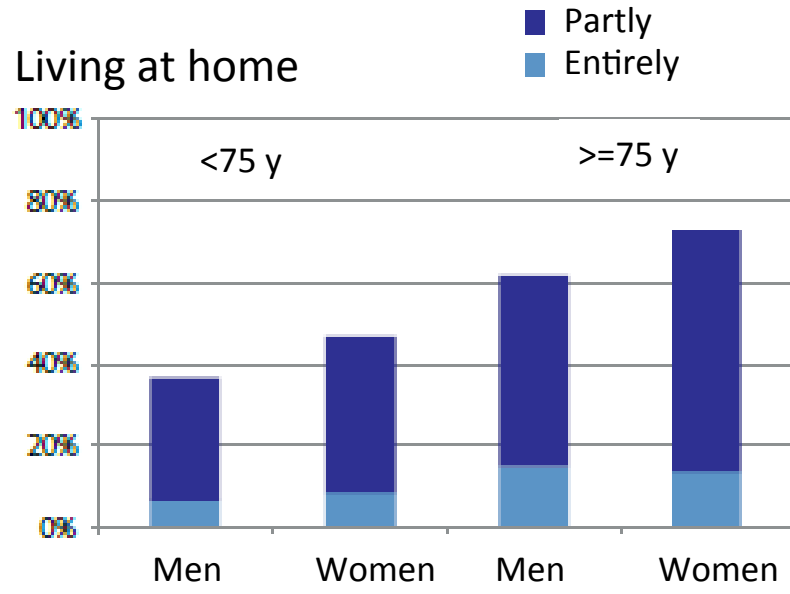


Figure 25

Proportion of patients with primary ADL dependency 3 months after stroke

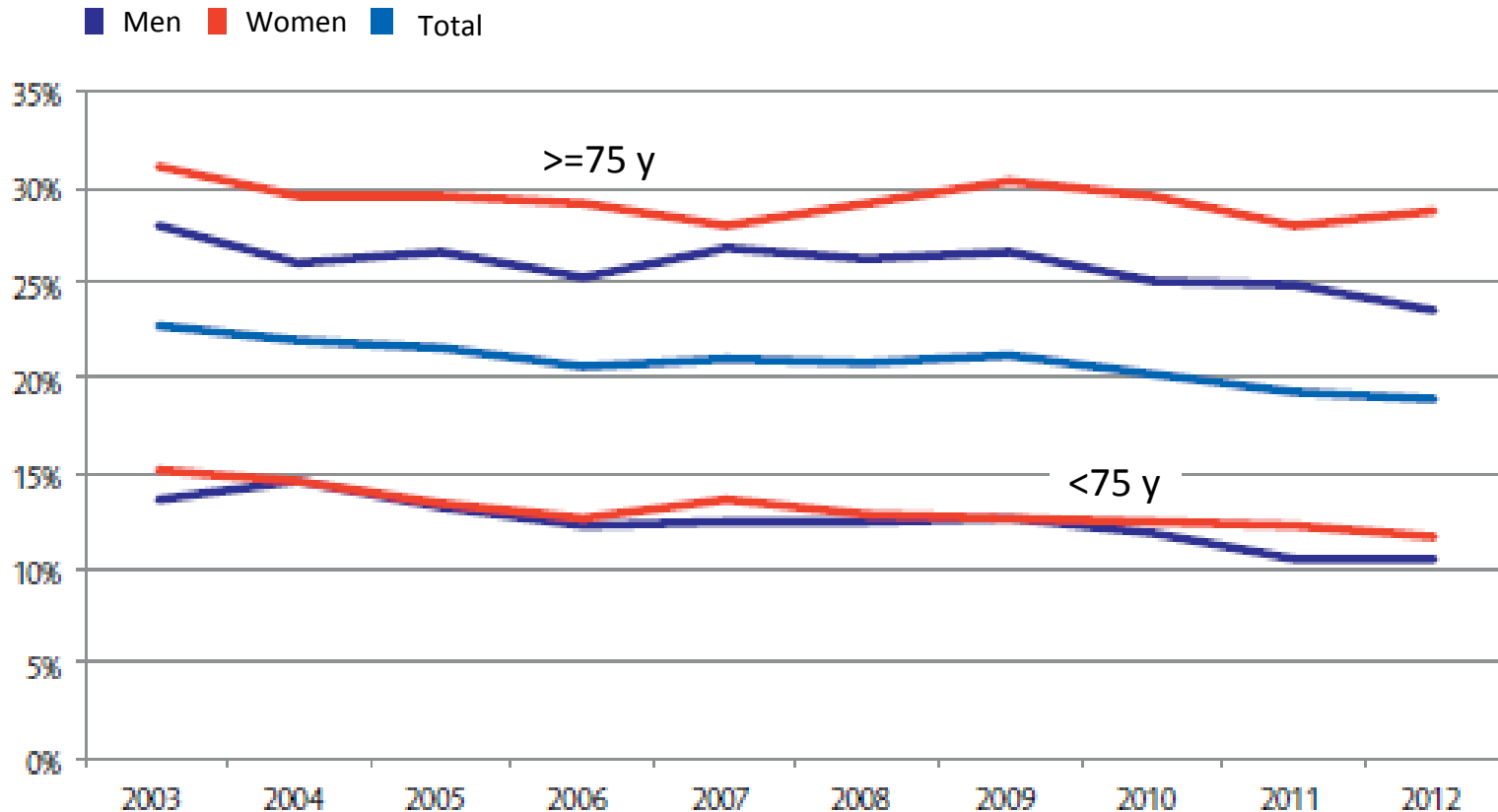


Figure 26

Proportion
with primary
ADL
dependency,
case-mix
adjusted
-
Comparison
between
hospitals

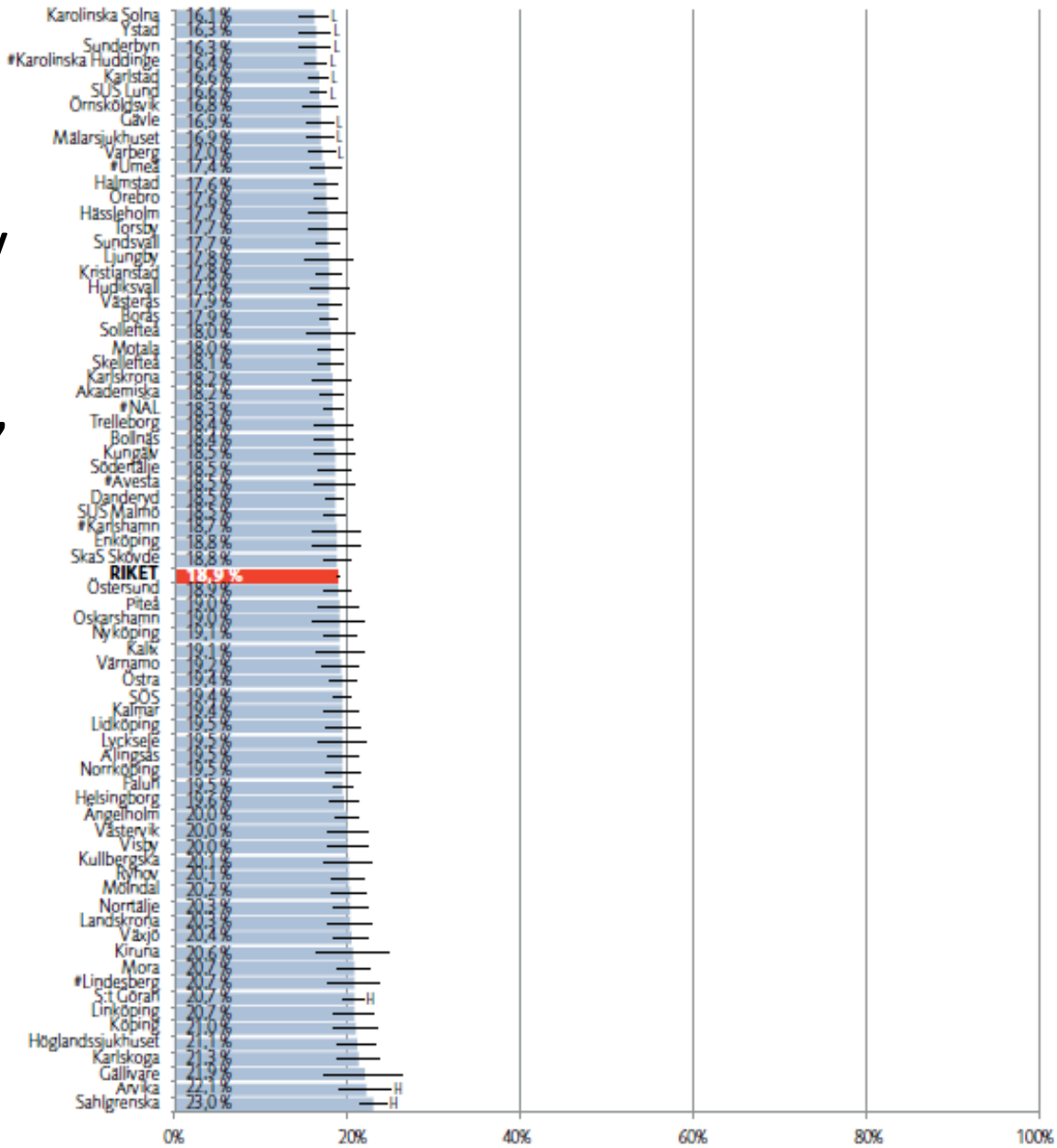


Figure 27

Place of living 3 months after stroke

- Other
- Institution
- At home, with community support
- At home, without community support

